



for impressive
performances

SWING BEAM SHEARS

SST/SSTX

STANDARD EXECUTION

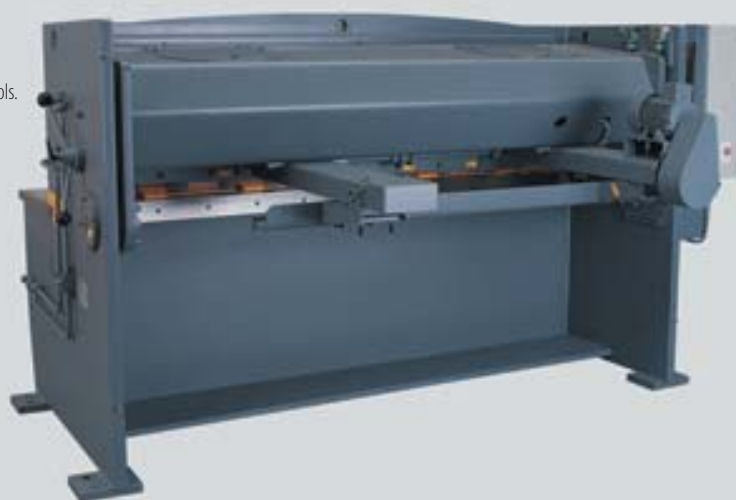
- SST shears are swing beam shears.
- This system assures a lifelong precision. The small rake angle limits deformation of sheets, which results in a long lifetime of cutting blades and a minimum of maintenance of pivoting points.
- Rigid, all steel welded frame.
- Stainless steel blades.
- Fixed cutting angle.
- Side frame gap.
- Counter of strokes.
- Independent holddowns.
- Cutting line illumination.
- Soft padded hydraulic holddowns.
- Possibility of increasing the cutting speed by decreasing the capacity.
- SP8 preselection control for positioning of the backgauge to the pre selected position, backgauge retraction and cutting length control.
- Quick manual blade clearance, adjustment by single handle on the side frame.
- 1 meter squaring arm with T-slot, scale and 1 tilting stop.
- Full shearing table with slots on 1,5 and 2 m.
- Motorised swing-up backgauge with adjustment from the front control panel, stroke 650 mm.
- Delivered with filled oil tank, instructions and maintenance manual and service tools.



SST 2004

OPTIONAL

- Ball transfers in the table (only for SST2504).
- Front stops.
- SC70 control unit (SSTX) for programmable backgauge positioning.



TECHNICAL SPECIFICATIONS

TYPE	CAPACITY MILD STEEL	CUTTING LENGTH	N° OF PLATE HOLD DOWNS	N° OF STROKES MAX./MIN. ANGLE	STROKE BACKGAUGE	GAP IN THE SIDEFRAME	CUTTING ANGLE ADJUSTMENT	WORKING HEIGHT	MOTOR POWER	WEIGHT APPROX.
	mm	mm			mm	mm	°	mm	kW	T
1504	4	1560	9	30-55	650	110	1°20'	820	7.5	3.35
2004	4	2060	12	30-48	650	110	1°20'	820	7.5	3.70
2504	4	2560	14	30-42	650	300	1°30'	858	7.5	5.25

Haco reserves the right to change any specifications without any prior notice.